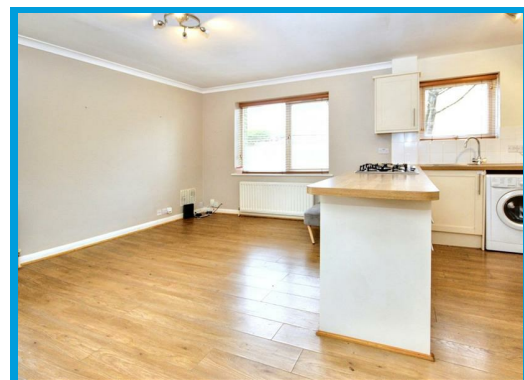
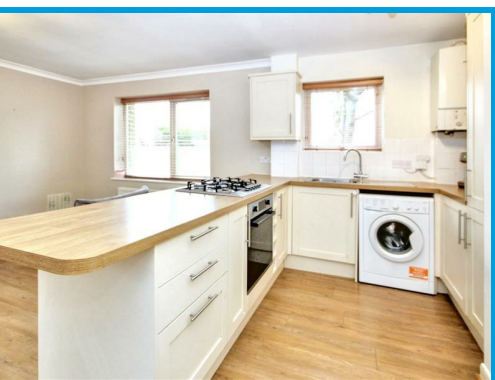




Mulberry Court, Guildford, GU4 7EQ

£1,275 PCM

Located in a very quiet, yet convenient location within easy access to Guildford town centre & the A3, this spacious light and airy one bedroom apartment boasts light and airy accommodation throughout with allocated parking. Local shops, restaurants and supermarkets are close by



Description

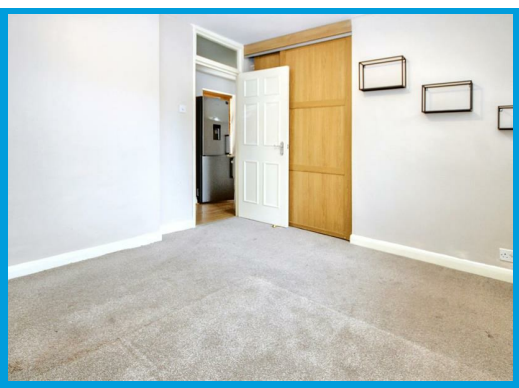
A well presented, light and airy apartment located in a quiet position within easy access to Guildford town centre and the A3.

Positioned within the popular Mulberry Court development, the accommodation comprises an entrance hall which leads to a modern bathroom with shower, a double bedroom with built in wardrobes, a modern open plan kitchen with a breakfast bar and a double aspect lounge.

Given the apartments position within the development, it is light and airy throughout giving it a spacious and modern feel.

Further features include communal grounds and an allocated parking space.

Sainsburys and Aldi supermarkets are nearby as well as a range of local shops, restaurants and take aways.



Energy Efficiency Rating		
	Current	Potential
Very energy efficient - lower running costs		
(92 plus) A		
(81-91) B		
(69-80) C		
(55-68) D		
(39-54) E		
(21-38) F		
(1-20) G		
Not energy efficient - higher running costs		
England & Wales	EU Directive 2002/91/EC	

Environmental Impact (CO ₂) Rating		
	Current	Potential
Very environmentally friendly - lower CO ₂ emissions		
(92 plus) A		
(81-91) B		
(69-80) C		
(55-68) D		
(39-54) E		
(21-38) F		
(1-20) G		
Not environmentally friendly - higher CO ₂ emissions		
England & Wales	EU Directive 2002/91/EC	

